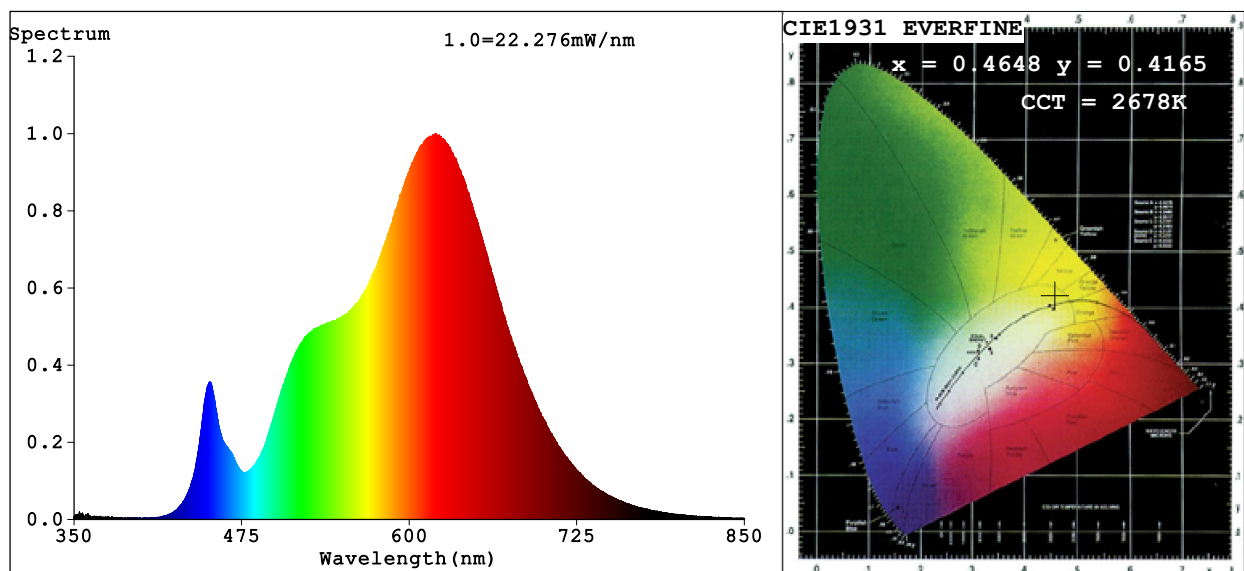


Spectrum Test Report



Color Parameters:

Chromaticity Coordinate: $x=0.4648$ $y=0.4165$ $u'=0.2630$ $v'=0.5303$

CCT=2678K (Duv=0.0018) Dominant WL:Ld =583.8nm Purity=64.5%

Ratio:R=26.8% G=71.2% B=2.0%; Peak WL:Lp=620.1nm FWHM=140.0nm

Render Index:Ra=93.1 CRI=90.0 TM30:Rf=91 Rg=99

R1 =94 R2 =96 R3 =98 R4 =96 R5 =94 R6 =97 R7 =91

R8 =79 R9 =52 R10=90 R11=98 R12=84 R13=95 R14=98 R15=87

Photo Parameters:

Flux = 986.8 lm Eff. : 92.49 lm/W Fe = 3.346 W

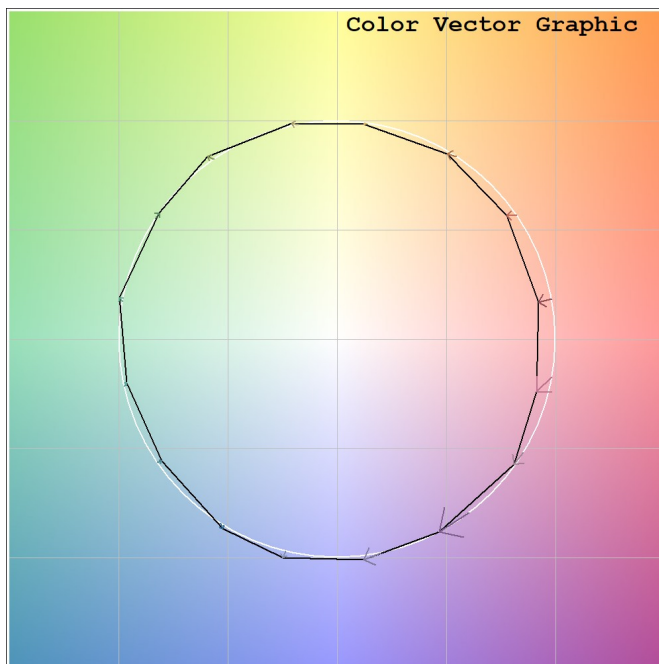
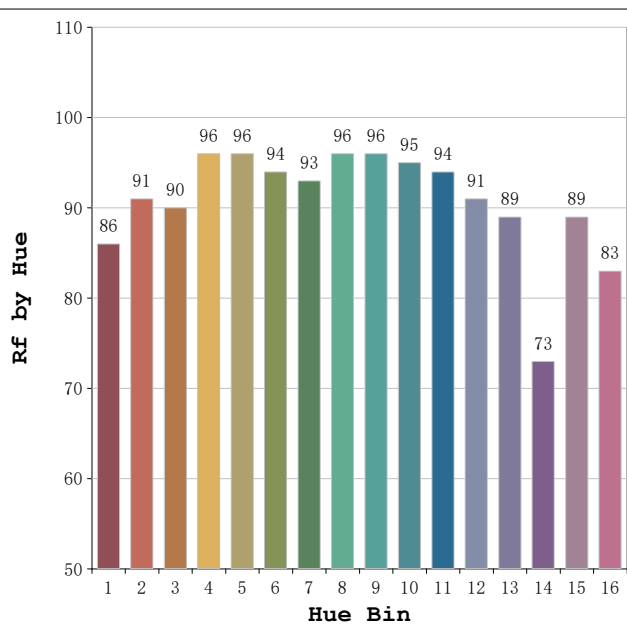
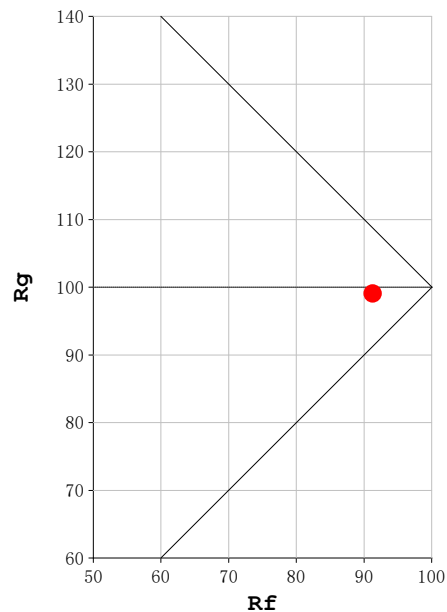
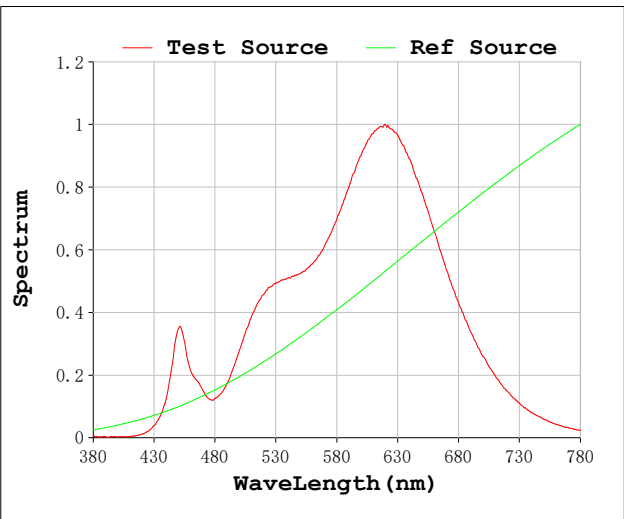
Electrical parameters:

V = 23.998 V I = 0.4446 A P = 10.67 W PF = 1.000

Status: Integral T = 1191 ms Ip = 48414 (74%)

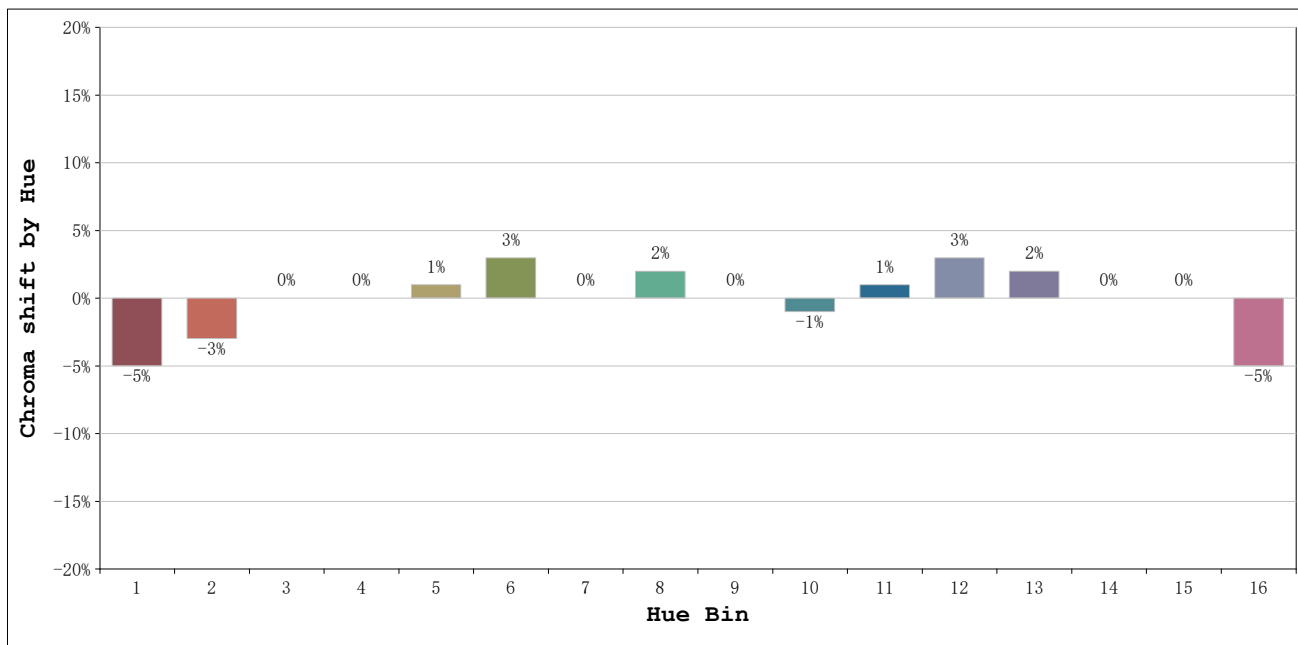
Model:Ecoled Élite gold 10 2700k	Number: 31.275
Tester:Sergio Carneros	Date:2026-06-16 12:32:05
Temperature:20Deg	Humidity:50%
Manufacturer:Luz negra	Remarks:100cm de tira flexible

Rf: 91 **CCT: 2678 K** **u': 0.2630**
Rg: 99 **Duv: 0.0018** **v': 0.5303**



Model:Ecoled Élite gold 10 2700k
 Tester:Sergio Carneros
 Temperature:20Deg
 Manufacturer:Luz negra

Number: 31.275
 Date:2026-06-16 12:32:05
 Humidity:50%
 Remarks:100cm de tira flexible



			Graphic shift(%)	
Hue Bin	Hue Angle	Rf	Chroma	Hue
1	0.0° - 22.5°	86	-5	0
2	22.5° - 45.0°	91	-3	2
3	45.0° - 67.5°	90	0	4
4	67.5° - 90.0°	96	0	1
5	90.0° - 112.5°	96	1	3
6	112.5° - 135.0°	94	3	2
7	135.0° - 157.5°	93	0	-2
8	157.5° - 180.0°	96	2	-1
9	180.0° - 202.5°	96	0	0
10	202.5° - 225.0°	95	-1	1
11	225.0° - 247.5°	94	1	2
12	247.5° - 270.0°	91	3	0
13	270.0° - 292.5°	89	2	-8
14	292.5° - 315.0°	73	0	-15
15	315.0° - 337.5°	89	0	-6
16	337.5° - 360.0°	83	-5	-7

Model:Ecoled Élite gold 10 2700k	Number: 31.275
Tester:Sergio Carneros	Date:2026-06-16 12:32:05
Temperature:20Deg	Humidity:50%
Manufacturer:Luz negra	Remarks:100cm de tira flexible